

After reading Spid the Spider Visits the Seven Wonders of the World, write a postcard to a friend or family member pretending you visited each wonder as well!  
Write about what you saw and what your favourite part was.



THE GREAT PYRAMID

The Great Pyramid, built from roughly 2550 to 2490 B.C. the largest of the Pyramids of Giza, is the only Great Wonder still standing.



---

---

---

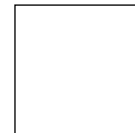
---

After reading Spid the Spider Visits the Seven Wonders of the World, write a postcard to a friend or family member pretending you visited each wonder as well! Write about what you saw and what your favourite part was.



HANGING GARDENS OF BABYLON

An amazing array of blooming flowers, luscious fruit, exotic foliage, and impressive waterfalls were said to have filled them. The hanging gardens were believed to have been built around 600 B.C., by Nebuchadnezzar II, who ruled Babylonia from 605–562 B.C.



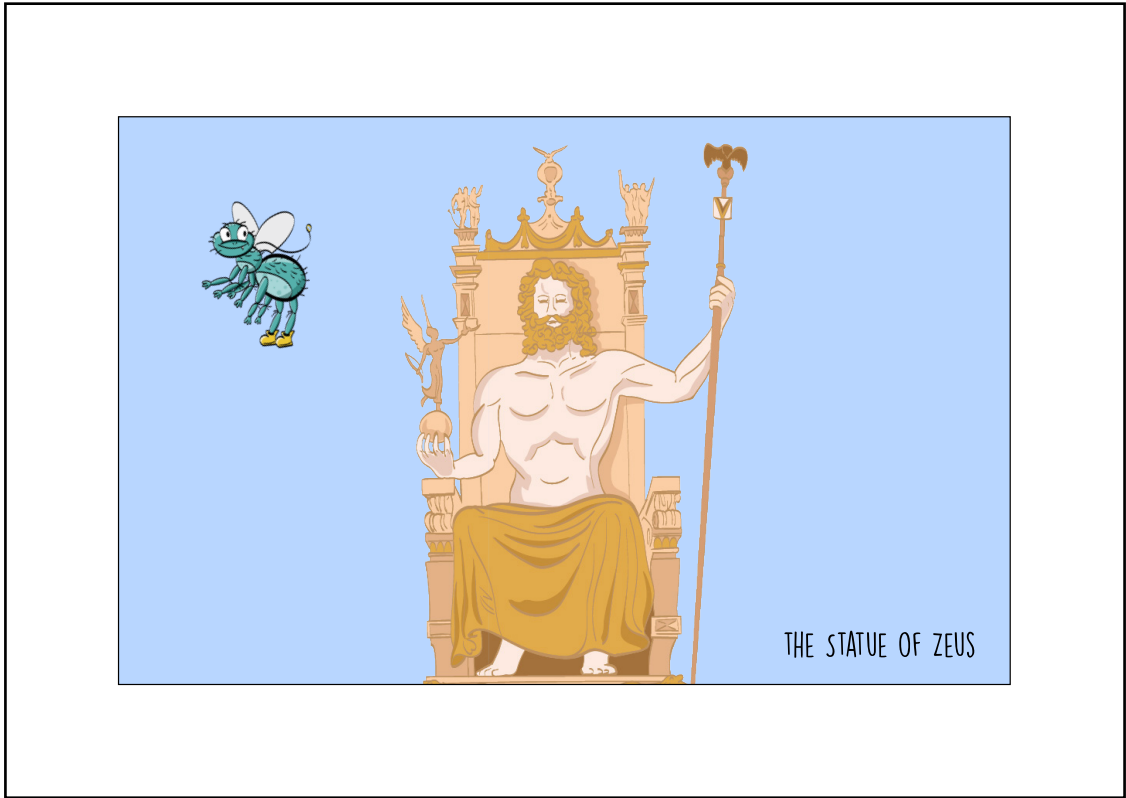
---

---

---

---

After reading Spid the Spider Visits the Seven Wonders of the World, write a postcard to a friend or family member pretending you visited each wonder as well! Write about what you saw and what your favourite part was.



### THE STATUE OF ZEUS

Housed in the Temple of Zeus at Olympia in western Greece around 435 B.C, the statue showed Zeus seated on a throne crusted in gold, precious gems, ivory, and ebony. Zeus held a statue of Nike, the goddess of victory, in his right hand. A sceptre topped with an eagle was held in his left hand.



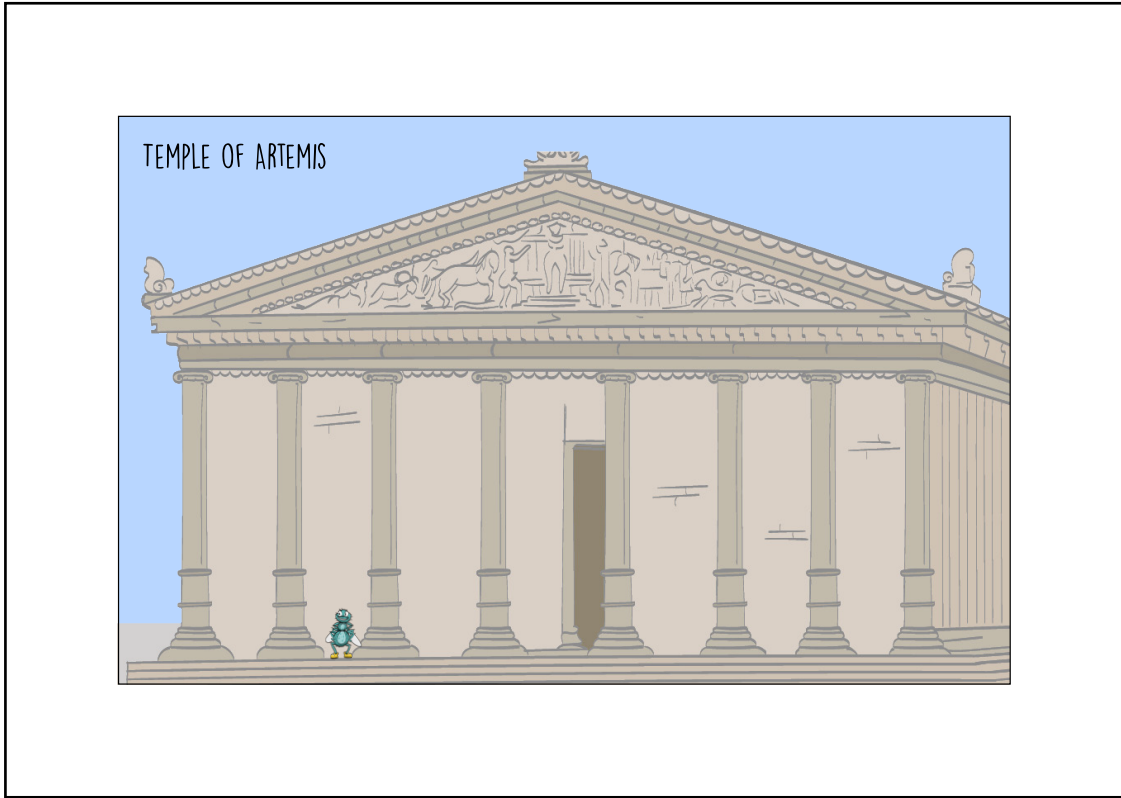
---

---

---

---

After reading Spid the Spider Visits the Seven Wonders of the World, write a postcard to a friend or family member pretending you visited each wonder as well! Write about what you saw and what your favourite part was.



### TEMPLE OF ARTEMIS

The temple, originally constructed to celebrate Artemis, the Greek goddess of the hunt, became a revered place of worship. It went through several phases of destruction and rebuilding. The most famous iteration, completed in 550 B.C., was about 115 metres (377 feet) long, 55 metres (200 feet) wide, included 127 Ionic-styled columns, and was decorated with fine sculptures and paintings.



---

---

---

---

After reading Spid the Spider Visits the Seven Wonders of the World, write a postcard to a friend or family member pretending you visited each wonder as well!  
Write about what you saw and what your favourite part was.



MAUSOLEUM OF HALICARNASSUS

MAUSOLEUM OF HALICARNASSUS

The mausoleum was designed between 353 and 350 B.C. by the Greek architects Satyrus and Pythis. It was created for Maussollos, a governor in the Persian Empire, and his wife and sister Artemisia II of Caria



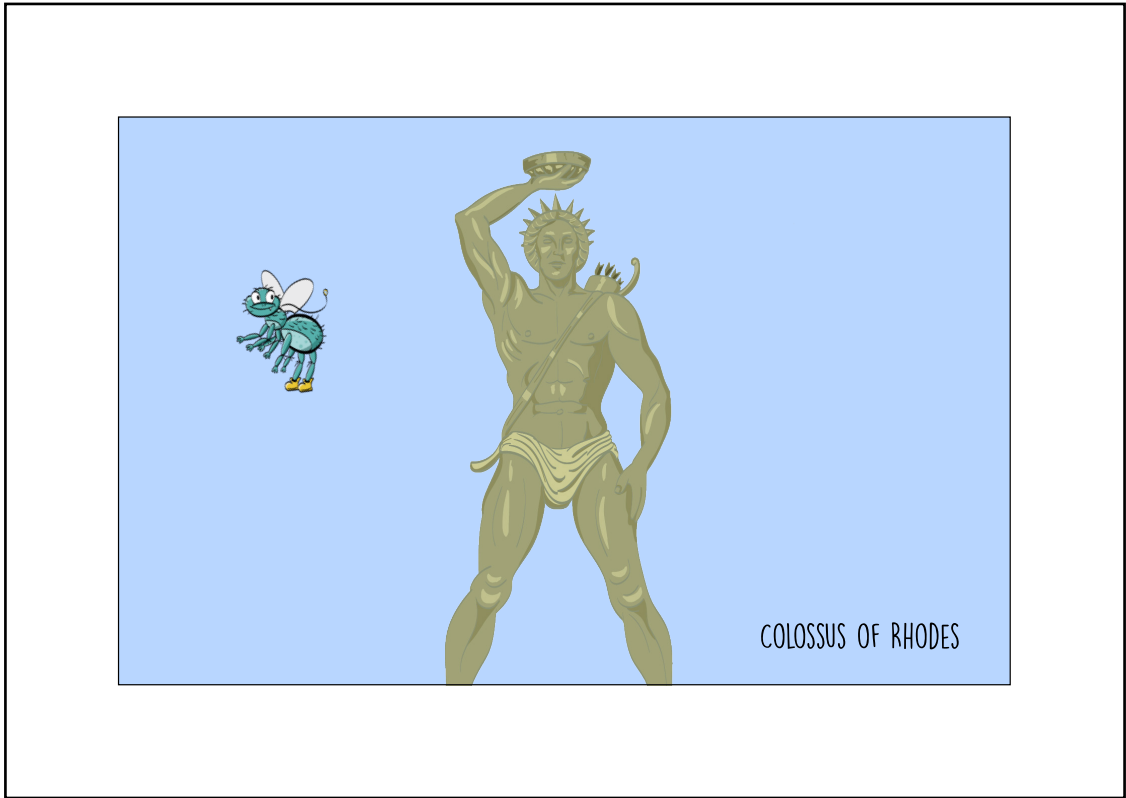
---

---

---

---

After reading Spid the Spider Visits the Seven Wonders of the World, write a postcard to a friend or family member pretending you visited each wonder as well!  
Write about what you saw and what your favourite part was.



### COLOSSUS OF RHODES

A statue of the Greek god Helios. Erected between 292 and 280 B.C. by the sculptor Chares of Lindos, and standing at about 33 metres (105-110 feet), the statue was a victory monument designed to honour the defeat of the invading army of Demetrius in 304 B.C.



---

---

---

---

After reading Spid the Spider Visits the Seven Wonders of the World, write a postcard to a friend or family member pretending you visited each wonder as well! Write about what you saw and what your favourite part was.



PHAROS OF ALEXANDRIA

This ancient lighthouse, considered a technical masterpiece that served as the model for all lighthouses that followed, was constructed on Pharos, an island in the harbour of Alexandria in Egypt, known as Kemet by its ancient citizens. It was completed between 285 and 247 B.C.



---

---

---

---